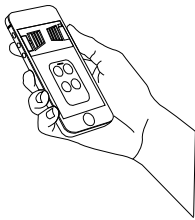


www.autoglideglobal.com

Tuya WIFI Remote User Manual



Dear Users: Thank you for purchasing our products!

Follow these steps to configure

APP Installation

- 1 Search for Tuya Smart app or Smart Life app in the application market, or scan the QR code as below, and choose to install them.

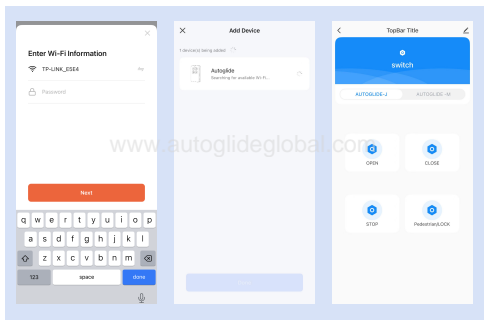


download QR code

- 2 Open the app after installation is complete.

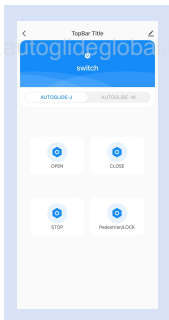
Add WiFi Remote Control

- (4) Enter the WIFI password and click Next. The device has been successfully added. Click “Done”.



Device Operation

- (1) Select the device and click to enter.
Enter the device interface.
- (2) On the APP interface, there are two options:AUTOGLIDE-J and AUTOGLIDE-M,you can choose and switch the code you need.OPEN,CLOSE,STOP, and Pedestrian/LOCK correspond to the OPEN,CLOSE,STOP, and Pedestrian/LOCK buttons on the remote control. When you click the button, the red indicator light on the control box flashes.



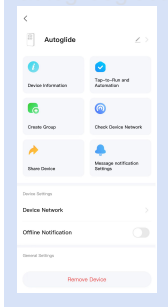
Device Unbind

Method 1:

- 1) Select the icon in the upper right corner of the device, select “Remove Device” at the bottom, Disconnect, and Confirm.
- 2) The blue light on the remote control remains on and then starts flashing. After 3 minutes of no operation, the indicator light remains on and enters standby mode.

Note: Within 3 minutes of flashing, you can directly re-enter the distribution network state.

www.autoglideglobal.com

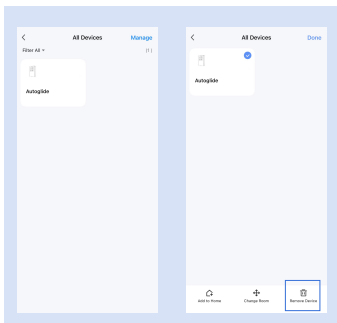


Device Unbind



Method 2:(Multiple devices can be deleted)

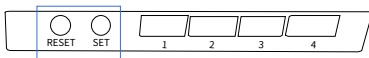
- 1) All devices, click on “Device Management”.
- 2) Check the device you want to delete and click “Remove Device”,Confirm. Successfully removed.
- 3) The blue light on the remote control remains on and then starts flashing. After 3 minutes of no operation, the indicator light remains on and enters standby mode.

Note: Within 3 minutes of flashing, you can directly re-enter the distribution network state.



Redistribution without unbinding

- 1) Press  once, the remote control indicator light remains on and then goes off. After long pressing the  key for 5 seconds, the indicator light remains on. Release the hand, and the indicator light starts to flash, entering the distribution network state.



www.autoglideglobal.com

Note: In this state, there is no need to unbind and you can directly enter the distribution network. After the distribution network is successful, the previous bound device will be automatically removed.

Device Share

- 1) Select the icon in the upper right corner of the device Autoglide, select "Share Device", and share the link.
- 2) The recipient of the sharing, click on the sharing link, and follow the prompts. Enter the app and confirm receiving the shared device.
- 3) After receiving, the shared device I received appears on all devices. Entering the device allows control of the device.

Note: If multiple people want to control the device, it can be shared through the device.

